



# WDADMINEXE : Checking the WINDEV executables remotely

## Overview

When a WINDEV application is installed in network, a program used to remotely check the application executables is automatically created: WDADMINEXE.

From the server, WDADMINEXE allows you to:

- [Control the application remotely](#):
  - The manager of a network application can stop (automatic or forced shutdown) the application for all the current users.
  - The manager of a network application can configure the frequency of the check for the client applications.
- [Get information about the last available update](#): The manager of a network application can find out the number of the current version and the number of the last compatible version.
- [Find out the characteristics of the application users](#).
- [Manage the versions installed on the client computers](#).
- [Manage the setups in Push mode](#).

## Start

To start WDADMINEXE, double-click the "WDADMINEXE.EXE" file in the "INSTALL" subdirectory of the setup directory of the application on the server.

**Remark:** The remote application control options and the details about the latest update are in an ".INI" file. This file is named "WDUPDATE.NET" by default. This file contains the references of the different applications to check and, for each one of them, the characteristics of the check to perform (for more details, see [Structure of control file](#)).



# WDADMINEXE : Controlling the application remotely

## Overview

The remote control of a WINDEV application allows the manager of a network application:

- [to manage the automatic or forced shutdown of the application](#) for all the current users. This application shutdown may be required when updating the application or the database for example.

For more details, see [Principle of remote check](#).

**Remark:** The management of remote control can be customized by [AppControl](#).

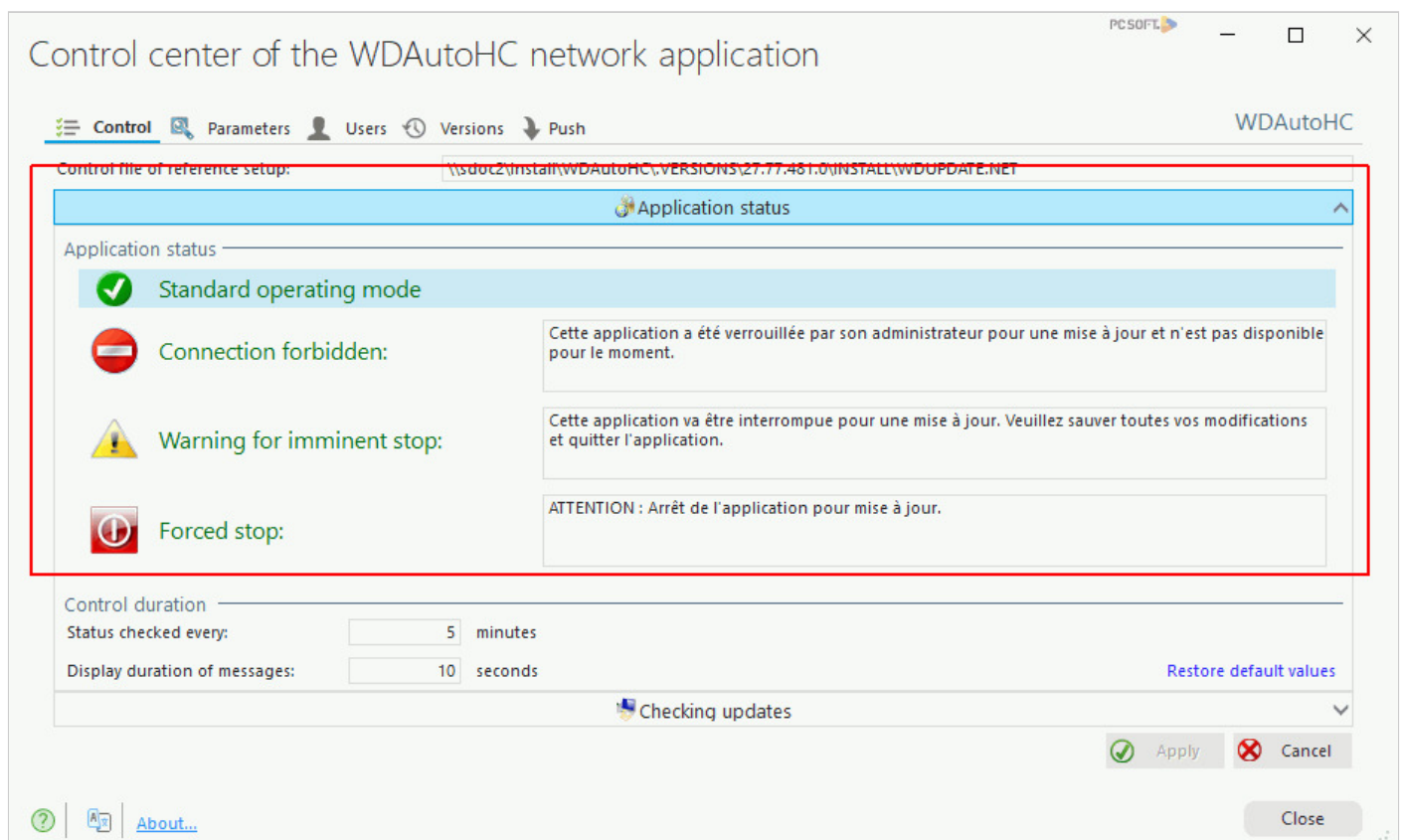
- [to manage the frequency for checking the updates](#).

The setting of this management is performed in the "Control" tab of WDADMINEXE.

**Important:** If the options for remote control are directly modified in "WDADMINEXE" (management program), these options will be reinitialized at each setup with the options specified when creating the setup program.

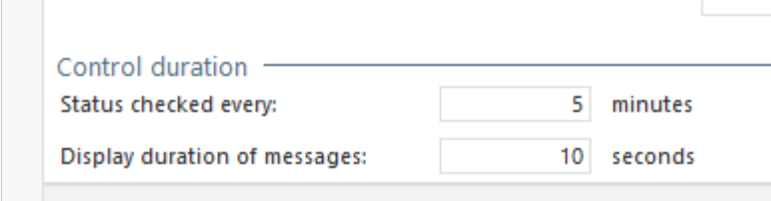
## Application status

The "Control" tab of WDADMINEXE is used to manage the application status and the messages displayed according to this status:



- **Standard operating mode:** the disconnection of the application users will be automatically managed. For more details, see [Managing the automatic disconnection](#).
- **Connection forbidden:** the users will not be able to connect to the application. When running the application, the message associated with the forbidden connection will be displayed during the specified "display duration of messages".  
The users who are already connected will be able to use the application as usual.
- **Warning of imminent shutdown:** the associated warning message will be displayed on the computers of the users currently connected to the application. This message will be displayed:
  - during the specified "display duration of messages".
  - whenever the application checks its status by connecting to the server. This check is performed at regular time intervals (defined in "Status checked every").  
If users try to connect to the application, the message associated with the forbidden connection will be displayed.
- **Forced stop:** the shutdown message is displayed on the computers of the users currently connected to the application. This message will be displayed:
  - during the specified "display duration of messages".
  - as soon as the application checks its status by connecting to the server. This check is performed at regular time intervals (defined in "Status checked every").  
Once this message is displayed, the users will be automatically disconnected and they will not be able to reconnect.  
If users try to connect to the application, the message associated with the forbidden connection will be displayed.

The options regarding the duration of controls are as follows:



The screenshot shows a configuration window titled "Control duration". It contains two settings:

Control duration	Value	Unit
Status checked every:	5	minutes
Display duration of messages:	10	seconds

- **Status checked every:** In an application installed on a network, the user application regularly checks:
  - its status according to the server application (reference application).
  - if an update is available (after updating the reference application).
- **Display duration of messages:** The different messages of WDADMINEXE (forbidden connection, imminent shutdown and forced stop) are displayed during the specified duration. The window displaying this message can be closed by the users before the end of the specified duration.

Remark: The parameters modified in WDADMINEXE are kept when installing an application update. To restore the values specified when configuring the setup, click "Restore default values".

## Managing the disconnection of users automatically

In order for the disconnection of users to be automatically performed, all you have to do is select "Standard operating mode".

If this option is selected, during the **mandatory** update of the application on the server, the following operations are automatically performed:

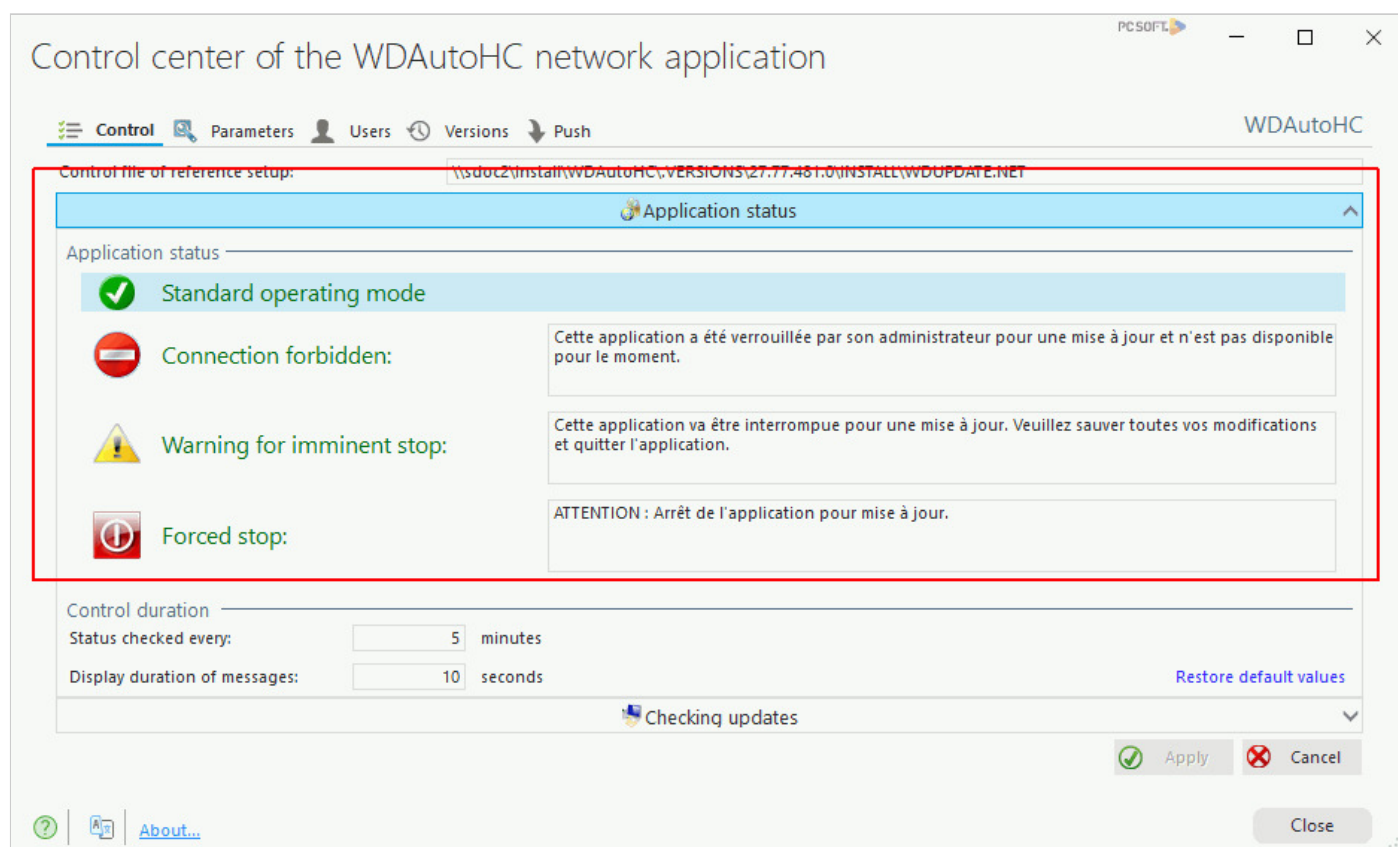
- The users currently connected to the application are listed.
- As soon as the user application checks its status by connecting to the server, the message indicating an imminent shutdown will be displayed on the user computers. This message will be displayed during the specified display duration.
- Once all the users have received the message indicating an imminent shutdown, the application update on the server switches to "Forced stop" during two minutes.
- During these two minutes, the shutdown message is displayed on the user computers.
- After these two minutes, the users will be automatically disconnected and they will be able to reconnect at the end of the application update on the server.
- Once the application was updated on the server, the users who reconnect to the application will have to update their user application.

If this option is selected, during the **optional** update of the application on the server, the following operations are automatically performed:

- The update of the application on the server is performed as usual.
- The users currently connected to the application will not be disconnected.
- Once the application was updated on the server, the users who reconnect to the application will have to choose between installing the update or starting the application directly.

## Checking updates

The "Control" tab of WDADMINEXE allows you to manage how the application checks for updates:



By default, the availability of an update on the server is checked whenever the application is started. This check frequency can be configured. It can be performed:

- Whenever the application is started.
- Every X days.

Whenever it is started, an application installed via a network setup checks whether an update is available on the reference server.

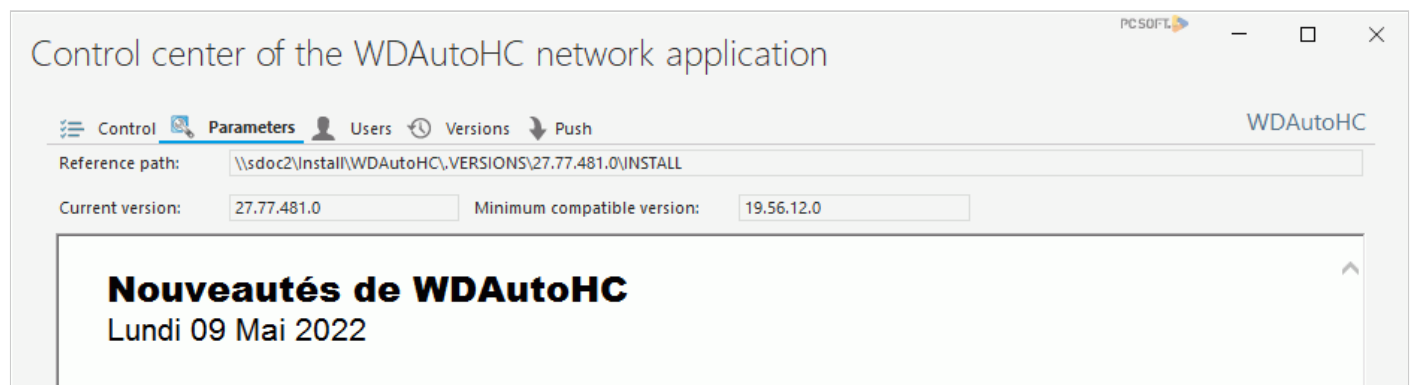
- If a more recent version is available on the server, the application update is proposed to the end user.
- If there is no network connection when opening the application, a warning message is displayed by default. This message can be useless for an application used on a mobile device, connected intermittently. In this case, simply select "Silent check: Don't inform the user"



# WDADMINEXE : Information about last available update

## Overview

The "Parameters" tab contains information regarding the last available update for the application:



- The **path of WDADMINEXE** ("WDADMINEXE.EXE" file) on the server.
- The **current version number**. This number corresponds to the version number of the last executable installed.
- The **number of the earliest compatible version**. This number corresponds to the version number of the executable found on the user computers from which the update is optional.

This information was specified when creating the setup program:

- in the wizard, "Live-update: Reference executable for checking versions".
- in the setup editor WDInst, "Setup settings .. Wizard" then "Network setup with automatic update".
- The **history** of the current version. This history contains the modifications performed by the developer in the current version of the application. This history was entered when creating the setup program of the current version. It corresponds to the help about the new features of the version.

The history can be typed:

- Via the wizard for creating the setup program. For more details, see the [Parameters for updating an application installed on the network](#).
- In the setup editor WDInst. For more details, see [Advanced options for the network setup](#).

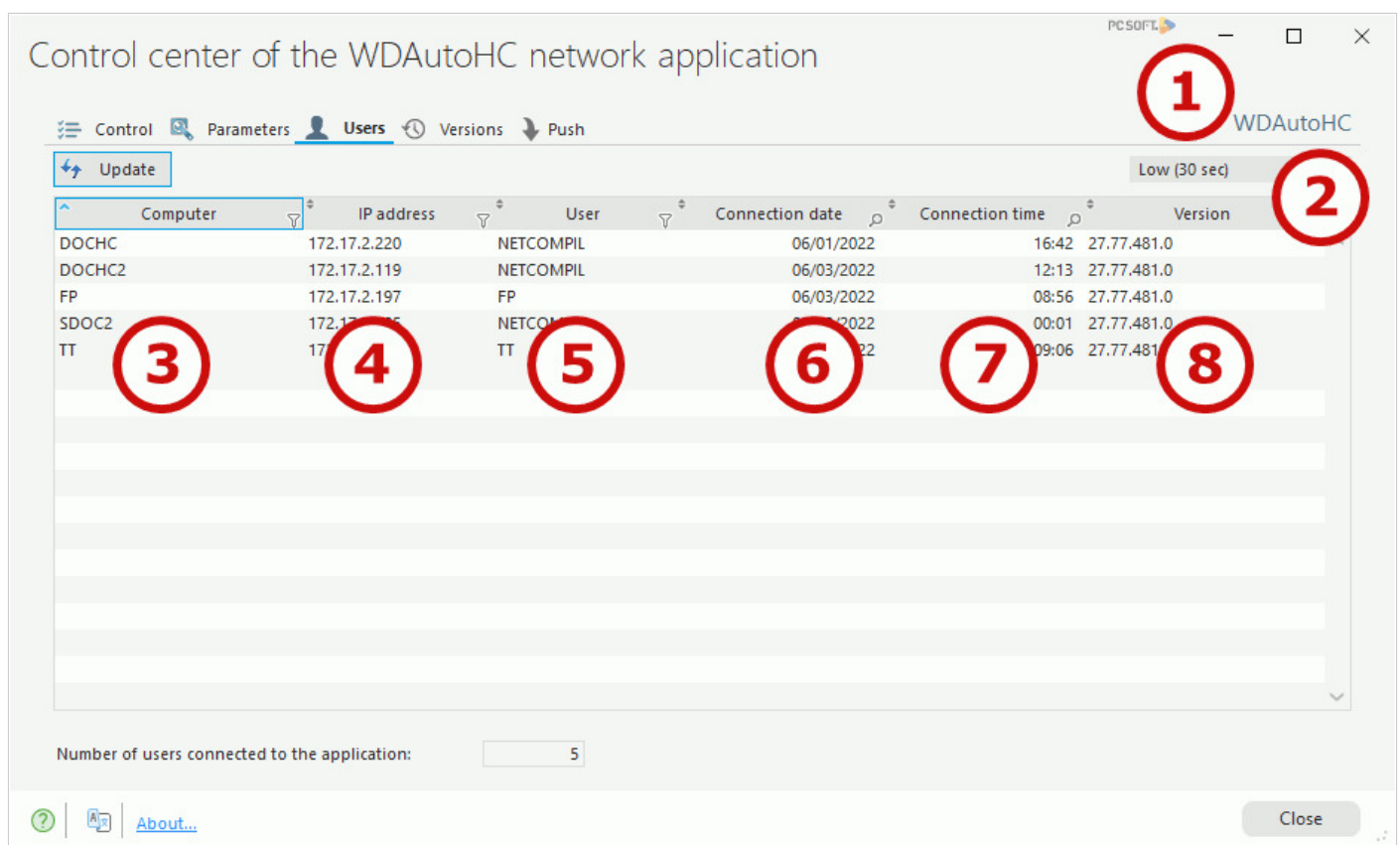


# WDADMINEXE: User characteristics

## Overview

The "Users" tab of WDADMINEXE allows you to find out from the server:

- The users currently connected to the application.
- For each connected user:
  - the computer used to start the application,
  - the version of the application used.



1

Name of the executable for the application whose information is displayed. The same application can be associated with several executables.

2

Rate of refresh for displaying the characteristics of the users.

3

Name of the computer from which the application was started. This name was defined in the network properties of the computer.

4

IP address of the computer from which the application was started.

5

Name of the user of the computer from which the application was started. This name was specified when starting the computer.

6

Date when the user started to connect to the application.

7

Time when the user started to connect to the application.

8

Version of the application used.

## Notes

- The data displayed comes from the "LOKxxx.tmp" files found in the "\INSTALL\LOCK" subdirectory of the setup directory of the application on the server. These files are temporary files (found during the connection only).
- The "Users" tab will be grayed if the management of users is not included in the setup program. To include the management of users in the setup program, see [Managing the users of an application](#).

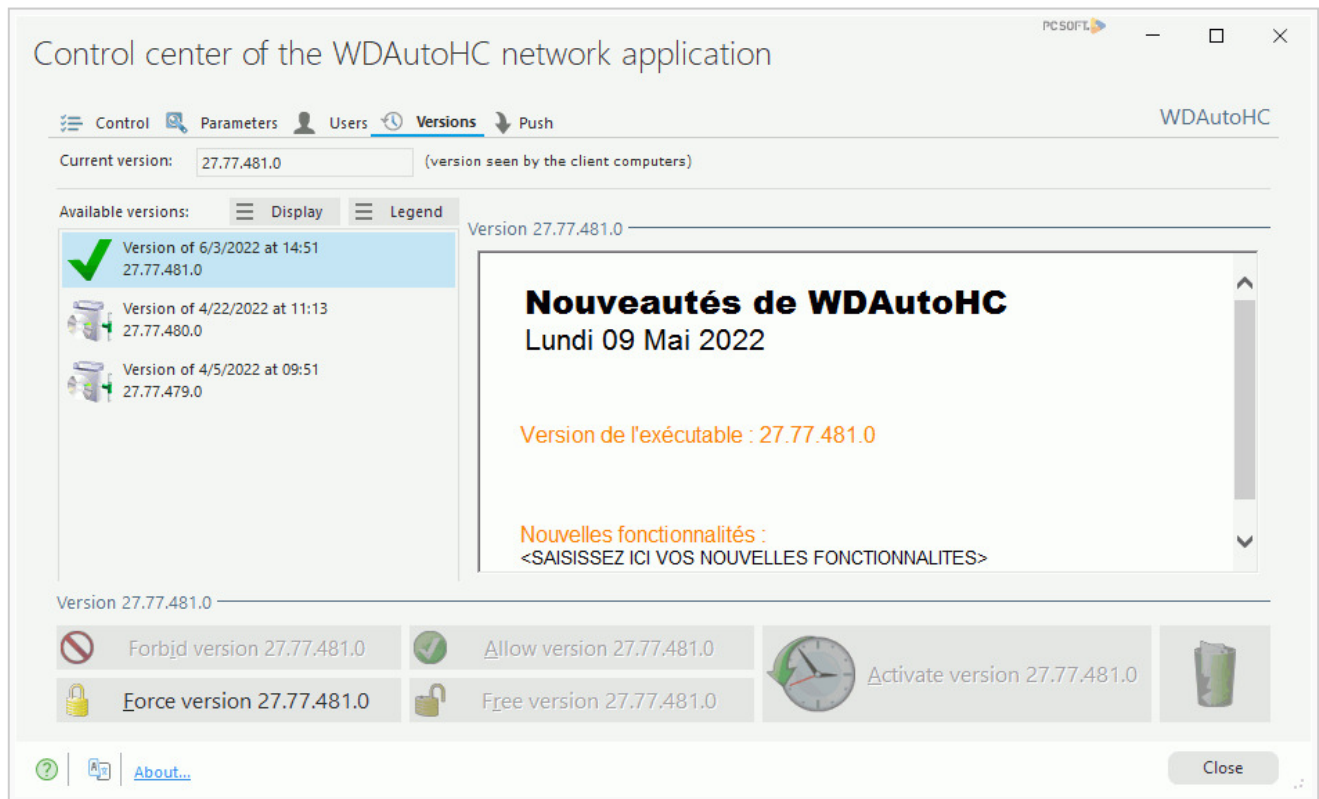




# WDADMINEXE: Managing versions

## Overview

The "Versions" tab of WDADMINEXE is used to manage from the server the versions installed on the client computers.



## Managing versions

The "Versions" tab is used to:

- Find out the current version. This version is used by the client computers that are updated.
- See the available versions: These versions are installed on the server. To choose the type of version to display, click the "Display" button:
  - active version: version currently used.
  - available version: version available on the server.
  - forbidden version: version available on the server but whose use is not allowed.

For each selected version, you have the ability to:

- See the help about the new features.
- **Forbid the version:** The selected version cannot be installed on the client computers.
- **Allow the version:** Used to allow a version that was forbidden.
- **Force the version:** Allows you to force the use of the selected version. Only an activated version can be forced. If the version is forced, the client computer cannot refuse the update during the next check.

- **Free the version:** Used to free a version that was forced.
- **Enable the version:** Enables the selected version. A version installed is automatically enabled by default. However, it can be installed without being enabled and it can be enabled later via WDADMINEXE.

**Remark:** The information available in this tab is displayed only if the history of versions was enabled when creating the setup program:

- In the wizard for setup creation, this activation is performed in the "Reference setup - History of versions" tab.

**Create setup**

Reference setup: History of versions

**1 Executable**  
Definition of EXE  
Content of EXE  
Version information  
Framework  
Security

**2 Setup**  
**Setup mode (5/6)**  
Setup files  
Data  
Additional Information  
Installer skin template  
Medium

**Keep a history of installed versions**  
The more recent versions will be stored on the reference server. They can be re-enabled or deleted from the control center of the network application.

**Keep no history of versions**  
If a history is found on the reference server, it will be deleted during the next deployment.

History options

Maximum number of stored versions:  ☐ No limits  
The 3 more recent versions will be stored on the reference server.

Store the versions as long as the size of the history does not exceed:  ☒ No limits

☒ Immediately enable the version during the deployment on the server  
The new installed version will be enabled: the update will be proposed to the client computers the next time the application is started.


☐ These parameters will replace the eventual parameters previously entered in deployment

☒ These parameters can be modified during the deployment on the server

WINDEV 27


- In WDIst, this activation is performed via "Setup settings .. Wizard", "Network setup with automatic update" option, "Advanced options" button, "Automatic update" tab, "Parameters of history of versions" button.

Parameters for the history of versions



Keep a history of installed versions

The more recent versions will be stored on the reference server. They can be re-enabled or deleted from the control center of the network application.



Keep no history of versions

If a history is found on the reference server, it will be deleted during the next deployment.

History options

Maximum number of stored versions:

3

☐ No limits

The 3 more recent versions will be stored on the reference server.


Store the versions as long as the size of the history does not exceed:

100 Mo


☒ No limits

☒ Immediately enable the version during the deployment on the server

The new installed version will be enabled: the update will be proposed to the client computers the next time the application is started.



☐ These parameters will replace the eventual parameters previously entered in deployment



☒ These parameters can be modified during the deployment on the server

Apply

OK

Cancel



# WDADMINEXE: Managing the setups in push

## Overview

WDADMINEXE is used to deploy network applications in push via the "Push" tab. The setup while taking the Push into account is used to deploy an application on all the client computers of a network from a single management computer.

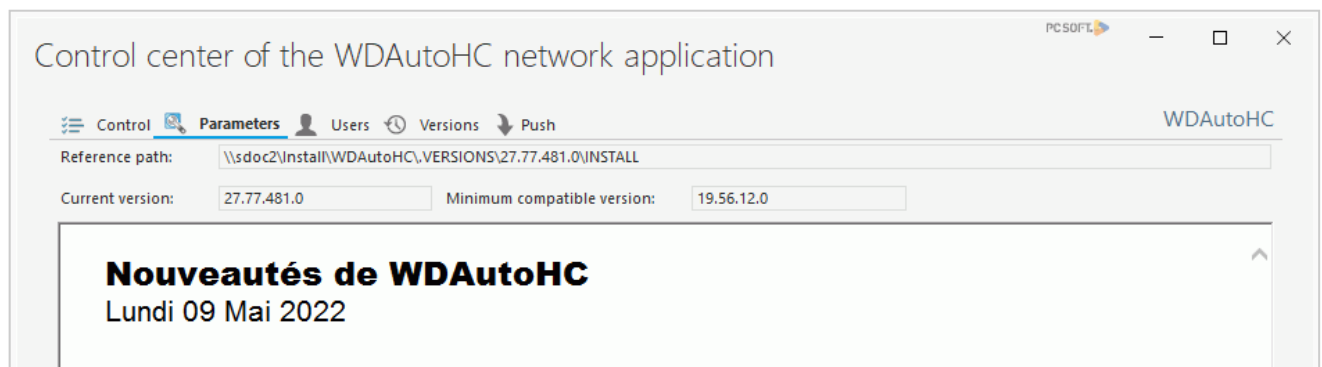
This setup mode is an option of the setup in local network with automatic update (Live Update).

## How to?

### Deploying in Push on the client computers

To deploy in push on the client computers:

1. Start WDAutoHC (see above).
2. Display the "Push" tab of the main window:



3. In "List of computers" (1), enter the username and the password of a Windows account with sufficient rights to enumerate the network computers.

**Remarks:**

- In an Active Directory, the username must have one of the following formats: DOMAIN\USER and/or USER@DOMAIN.
- This account does not have to be an administrator.
- You have the ability to store the connection information. If this option is used, it is important not to store the password of an administrator.
- You also have the ability to load a list of computers from a text file. The text file can contain:
  - computer names or IP addresses.
  - comments in "// Comment" format.

Each line must contain a name (or IP address) and a comment. For example:

```
VIB //Vincent's computer
FP //Florence's computer
```

4. Click "List the computers" to validate the connection information and to start enumerating the client computers.

**Caution:** depending on the LDAP policies defined in Active Directory, the import can be limited to 1,000 users. In this case, to remove this limitation, it is necessary to modify the LDAP MaxPageSize parameter. For more details, see <https://support.microsoft.com/kb/315071>.

5. The criteria (2) and the list of groups (3) can be used to filter the computers to display. The list of groups is available on an Active Directory domain only.

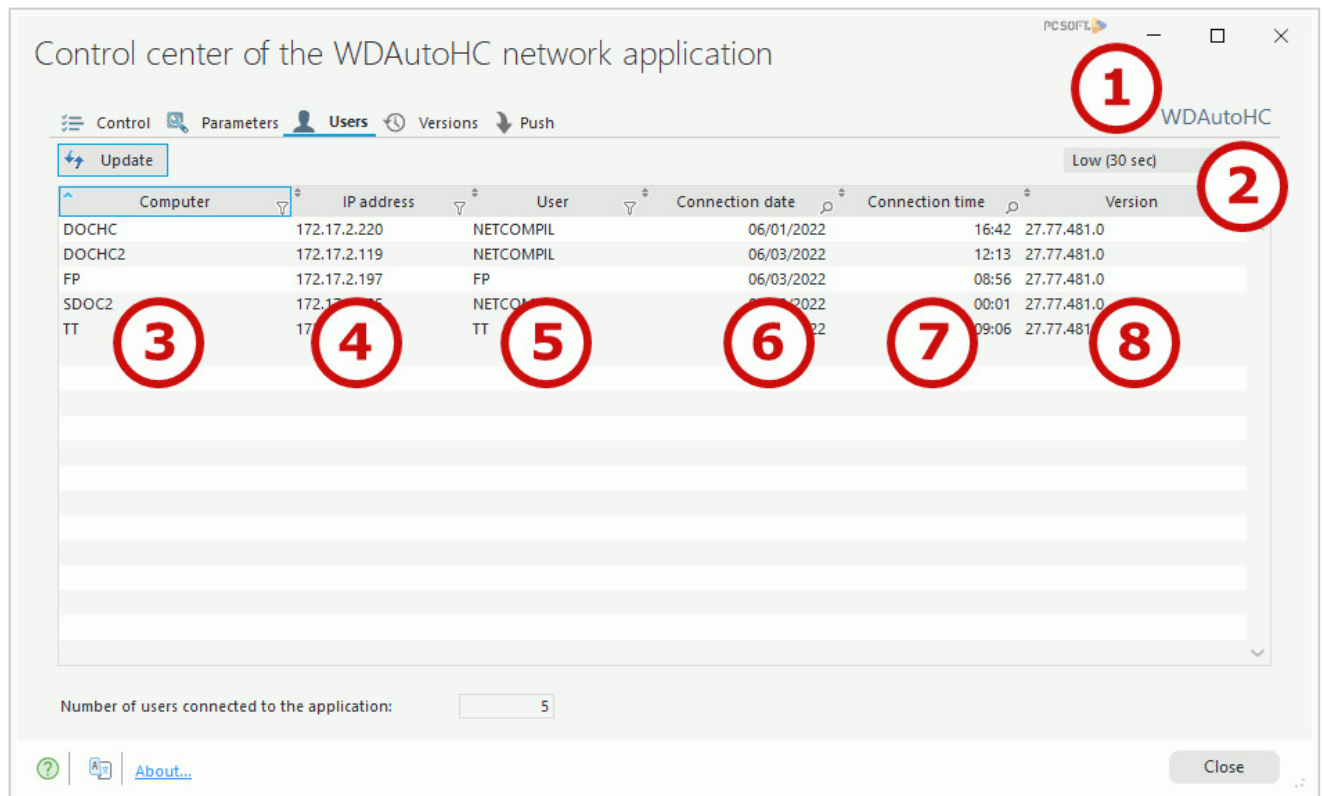
6. The table of computers (4) displays:

- the client computers found,
- the comment if text file is found.
- the version number of the application if it is already installed,
- the result of the previous Push setups.

7. Select the client computers on which the application must be deployed in Push mode.

8. Click "Start the PUSH setup..." to start the setup.

The window for starting the setup is displayed:



9. If several versions of the application are found in the reference setup, select the version that must be deployed in Push (1).

10. The summary (2) displays the list of target computers for the setup. Some computers can be deleted from this list via the popup menu.

11. You can use a Windows account other than the one that was used to enumerate the computers if necessary (3).

12. You can program the Push setup so that it is performed thereafter (4). This option allows you to automatically update a set of client computers outside the working hours for example.

13. The validation of this window starts the Push setups. The progress can be monitored in the table of computers of the main window of WDADMINEXE.

**Remark:** An "Advanced" button is used to configure the timeout for the Push setups. If several setups fail with timeout errors, you may have to adjust this parameter.

### Services required on the target computers

**Remark:** Depending on the Windows versions used, the names of these services may change in the control panel.

The following services must be started on the target computers of the setup in Push mode:

- File share ("lanmanserver" service)
- Access to the remote registry ("RemoteRegistry" service)

Furthermore, the administrative share (ADMIN\$) must exist. This share can be viewed in the management tool named "Computer management", in "System tools .. Shared folders .. Shares".

### Services required on the computer that performs the Push setup

The "lanmanworkstation" service must be started on the computer that performs of the setup in Push mode:.